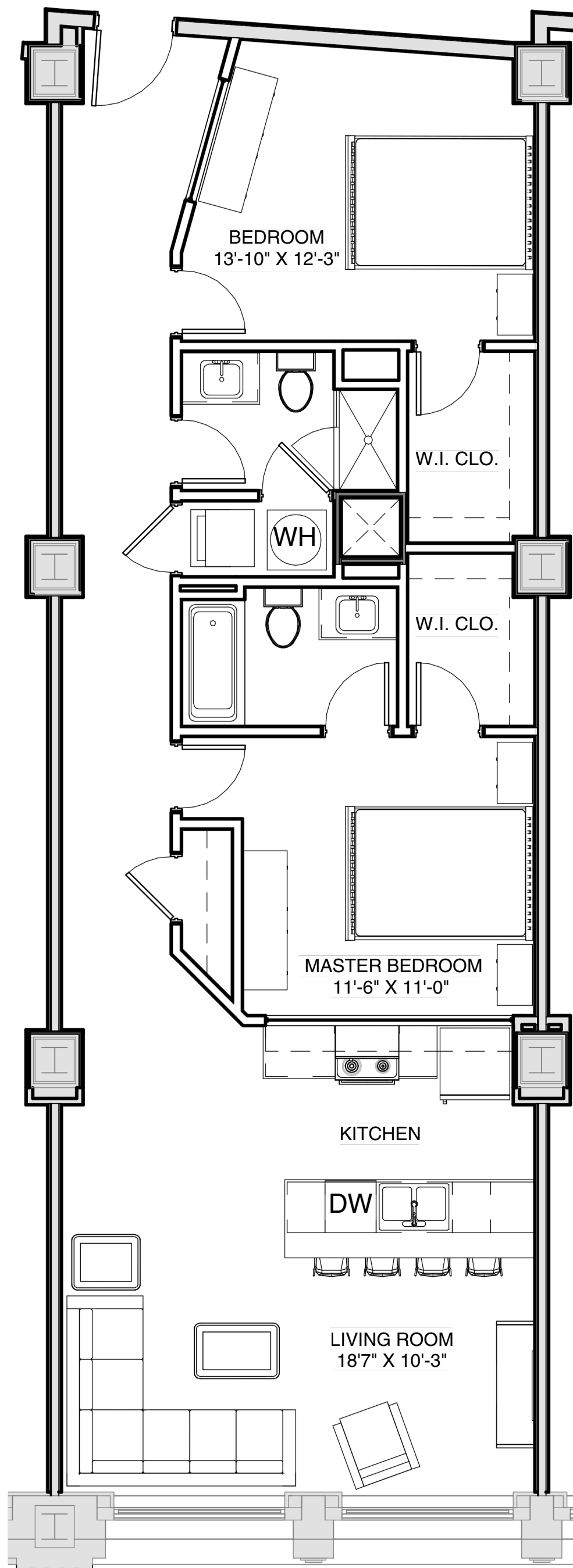


THE ATHLON

Where fitness and comfort reside together.



SUITE # 303 CITY VIEW TWO BEDROOM WITH TWO BATH

For those who need an extra space for entertaining or hobby.

12 MONTH LEASE PRICE: \$1,799.00/MONTH

1.092 SQFT

READY FOR MOVE IN WITHIN 30 DAYS



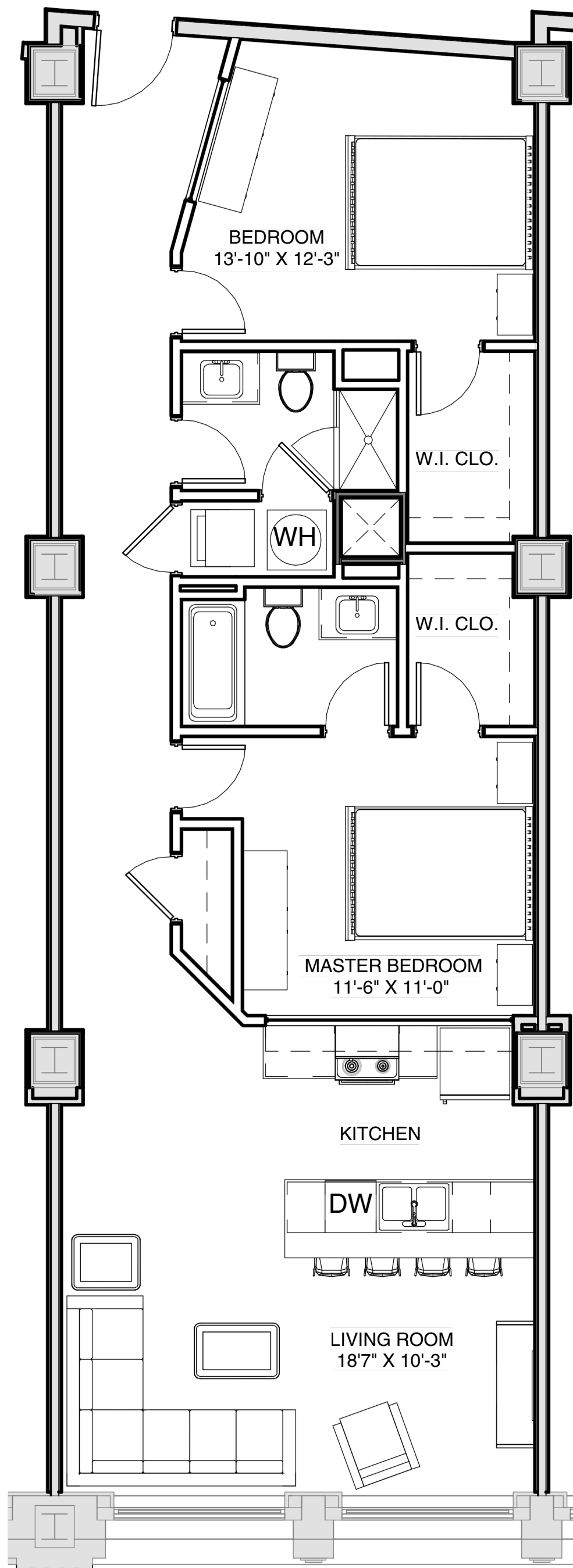
[HTTPS://THEATHLONCAG.COM/](https://theathloncag.com/)



*VIDEO OF DIFFERENT APARTMENT WITH SIMILIAR FLOOR PLAN

THE ATHLON

Where fitness and comfort reside together.



SUITE # 603 TWO BEDROOM WITH CITY VIEWS

12 MONTH LEASE PRICE: \$1,799.00/MONTH

1.092 SQFT

READY FOR MOVE IN : WITHIN 30 DAYS



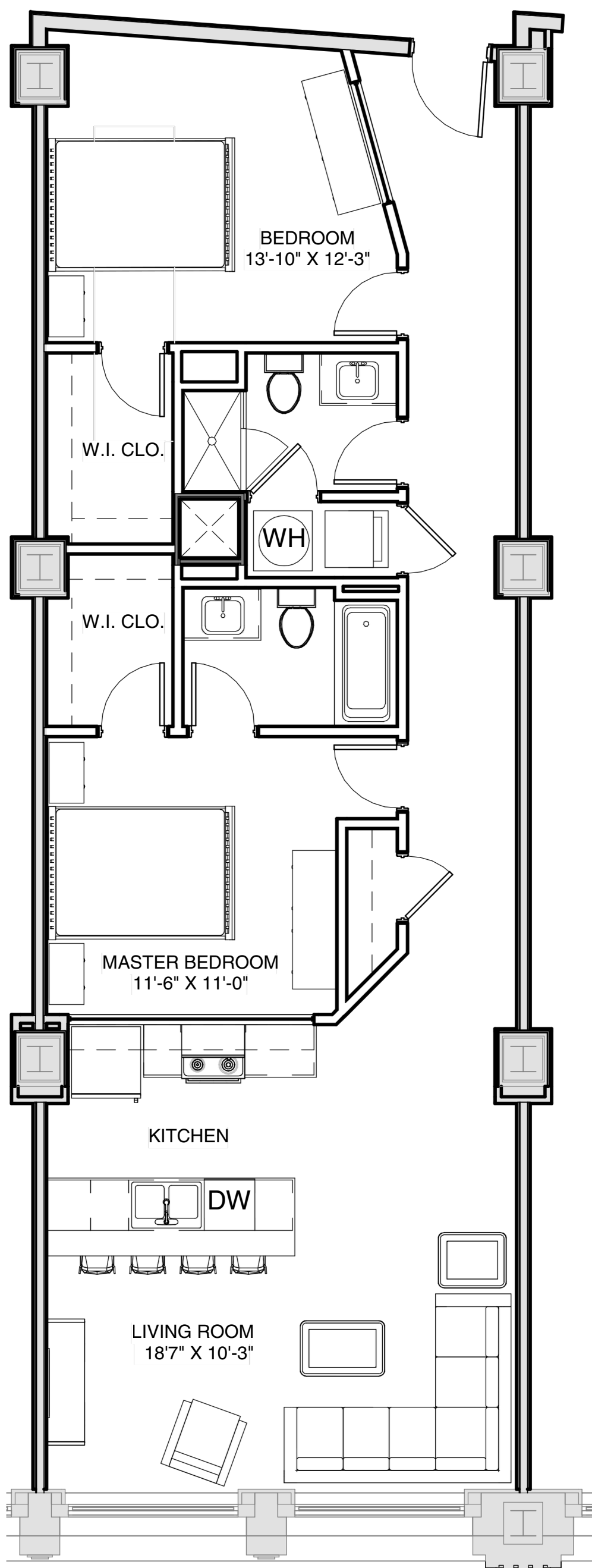
[HTTPS://THEATHLONCAG.COM/](https://theathloncag.com/)



*VIDEO OF DIFFERENT APARTMENT WITH SIMILIAR FLOOR PLAN

THE ATHLON

Where fitness and comfort reside together.



SUITE # 406 TWO BEDROOM TWO BATH CITY VIEW

12 MONTH LEASE PRICE: \$1,799.00/MONTH

1,092SQFT

READY: WITHIN 30 DAYS



[HTTPS://THEATHLONCAG.COM/](https://theathloncag.com/)

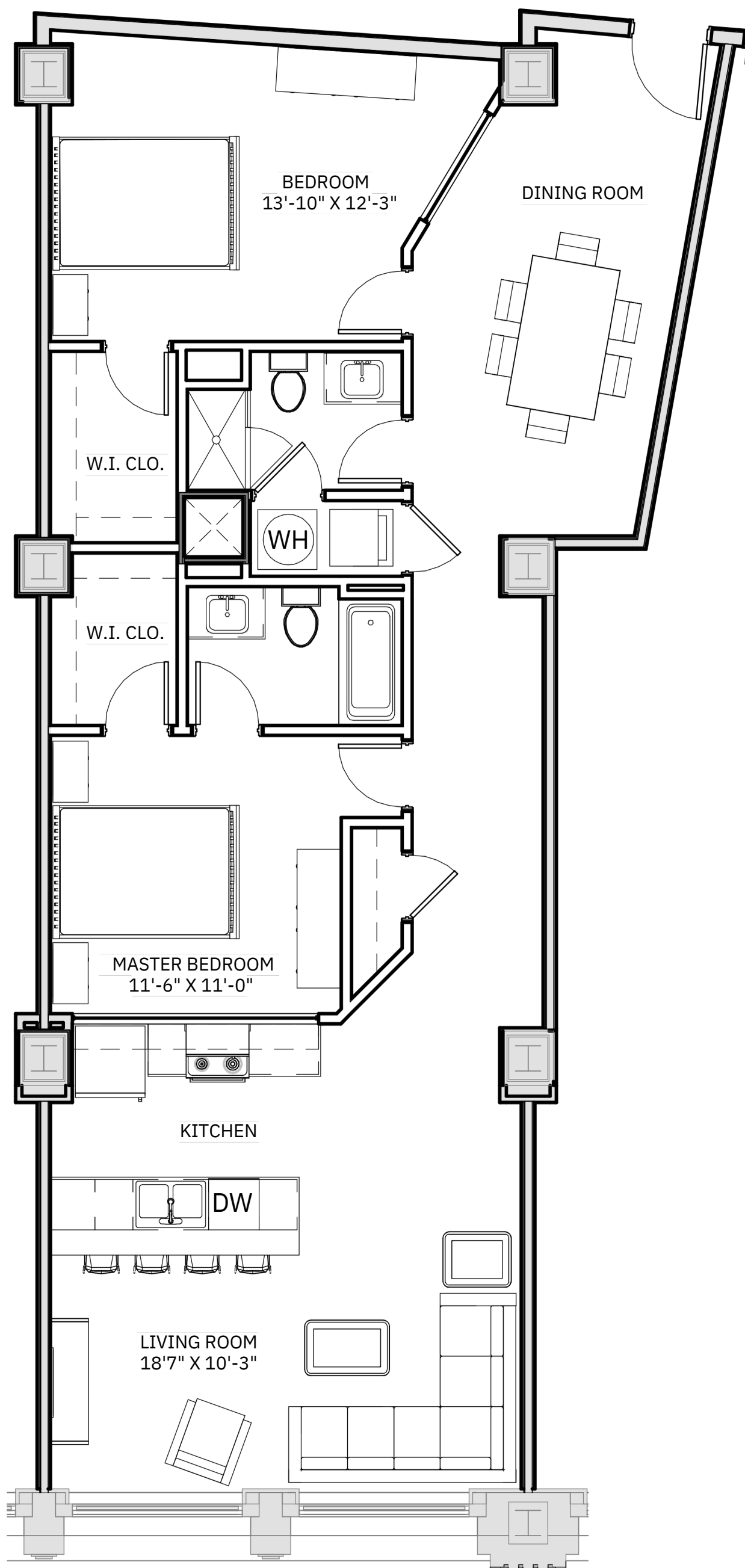


*VIDEO OF DIFFERENT APARTMENT WITH SIMILIAR FLOOR PLAN



THE ATHLON

Where fitness and comfort reside together.



SUITE # 602 TWO BEDROOM WITH DEDICATED DINING ROOM

For those who need an extra space for entertaining or hobby.

12 MONTH LEASE PRICE: \$1,899.00/MONTH

1,229 SQFT

READY: WITHIN 30 DAYS



[HTTPS://THEATHLONCAG.COM/](https://theathloncag.com/)



THE ATHLON

Where fitness and comfort reside together.



SUITE # 1202 THREE STORY TOWNHOME WITH TWO BED AND TWO AND A HALF BATH

Large bedrooms and two full bathrooms make this apartment the largest square foot design in the building.

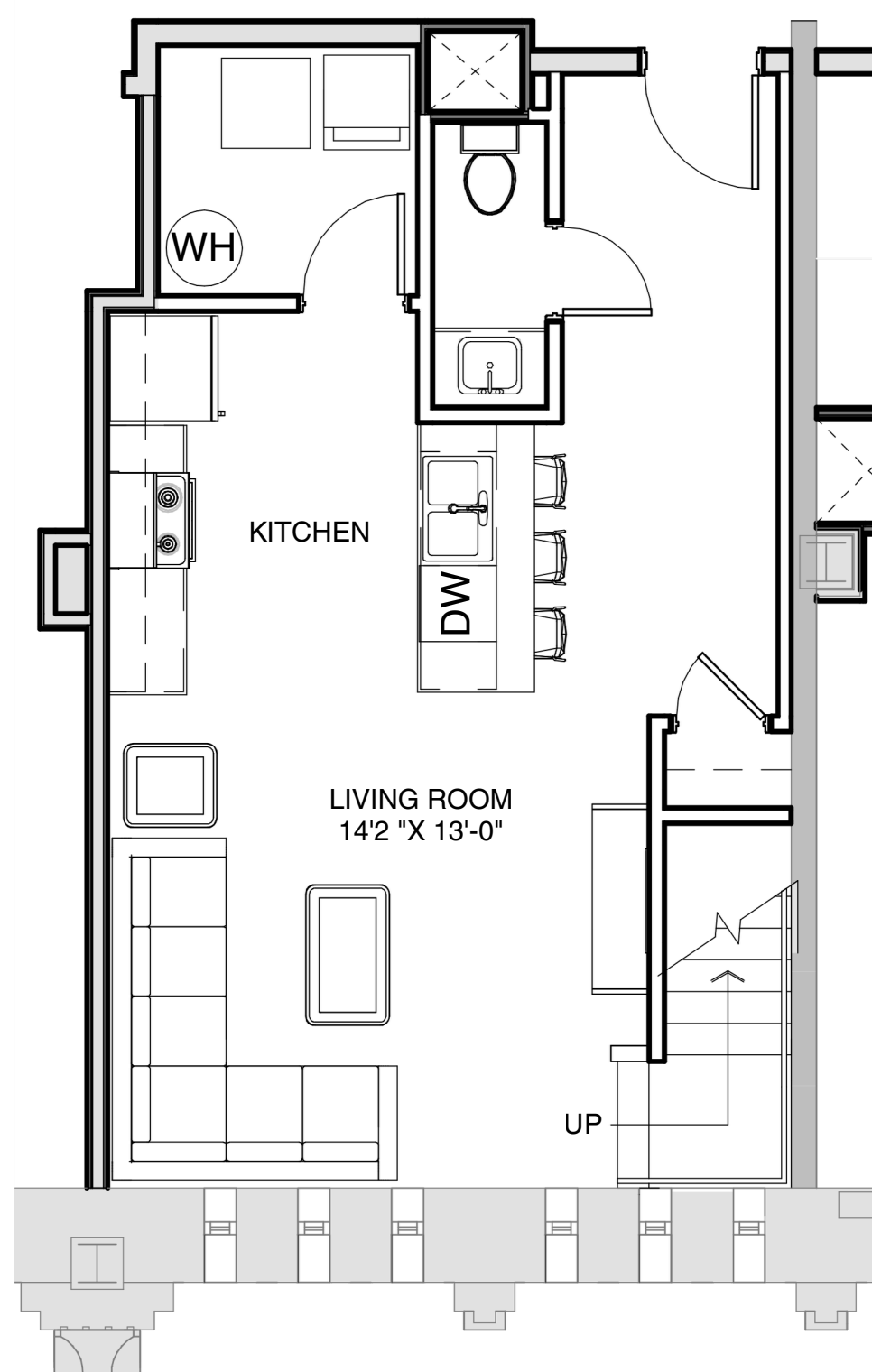
12 MONTH LEASE PRICE:

\$2,000/MONTH

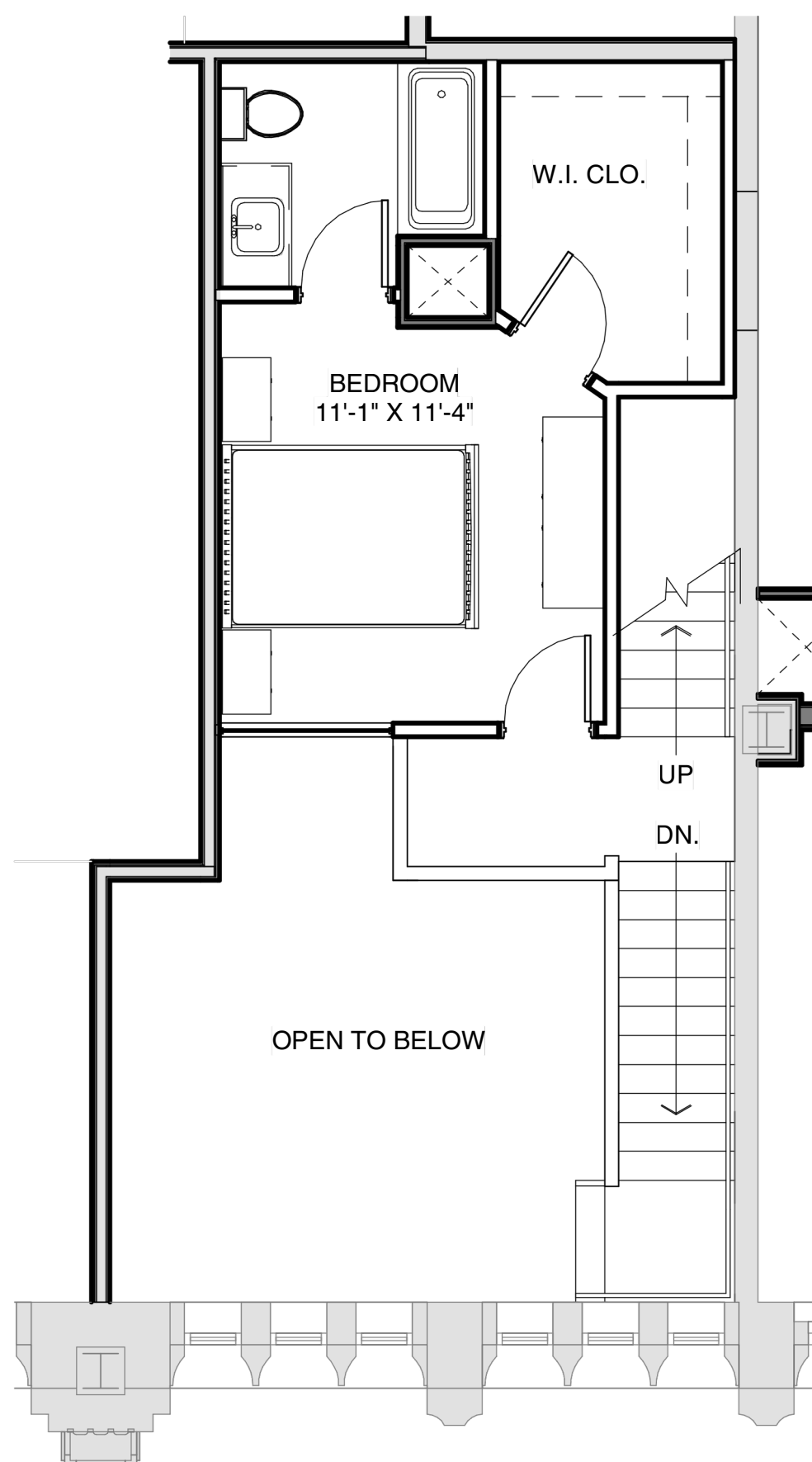
1,133 SQFT

READY FOR MOVE IN

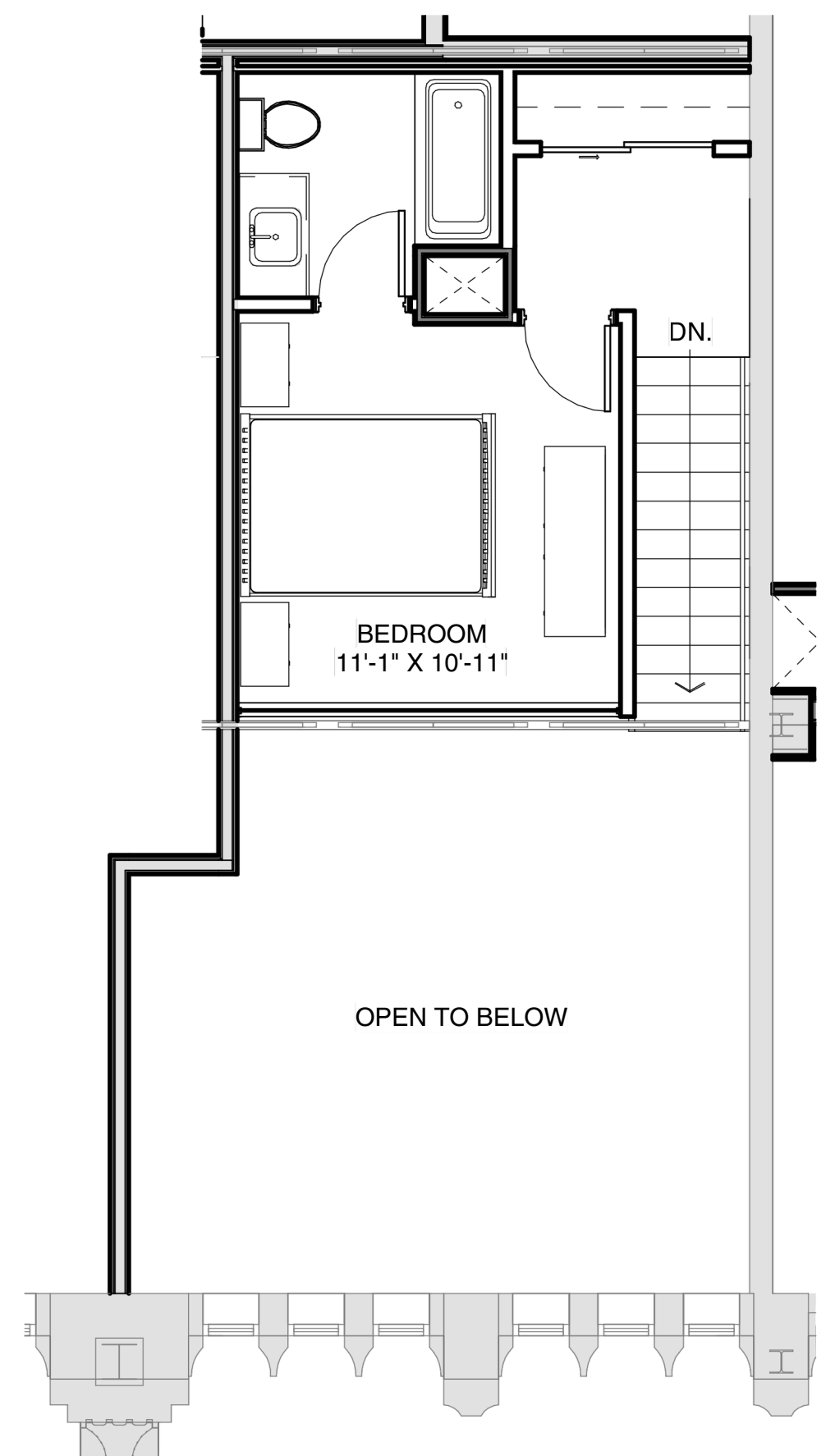
WITHIN 30 DAYS



LOWER LEVEL



MID LEVEL



UPPER LEVEL

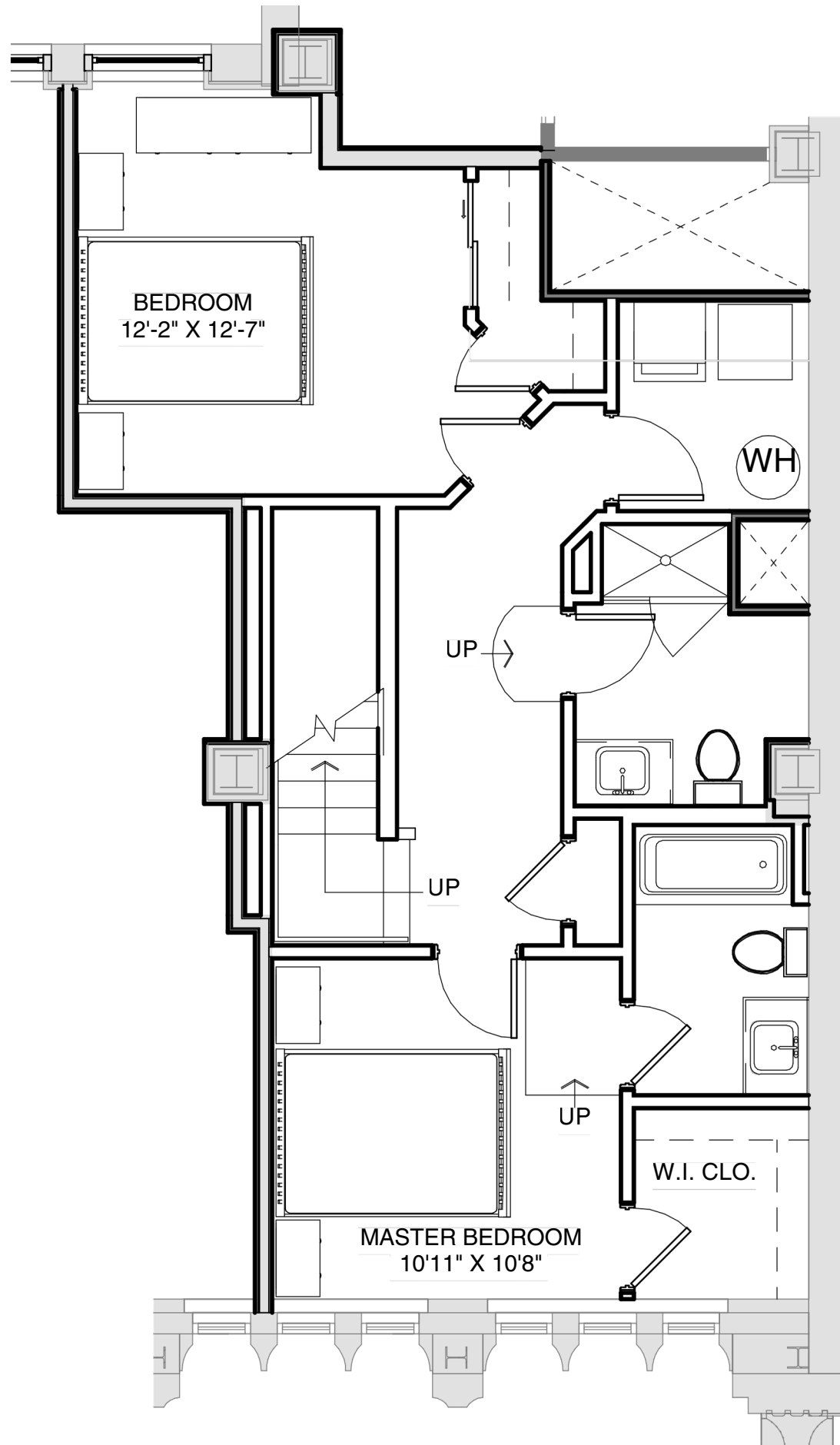


[HTTPS://THEATHLONCAG.COM/](https://theathloncag.com/)

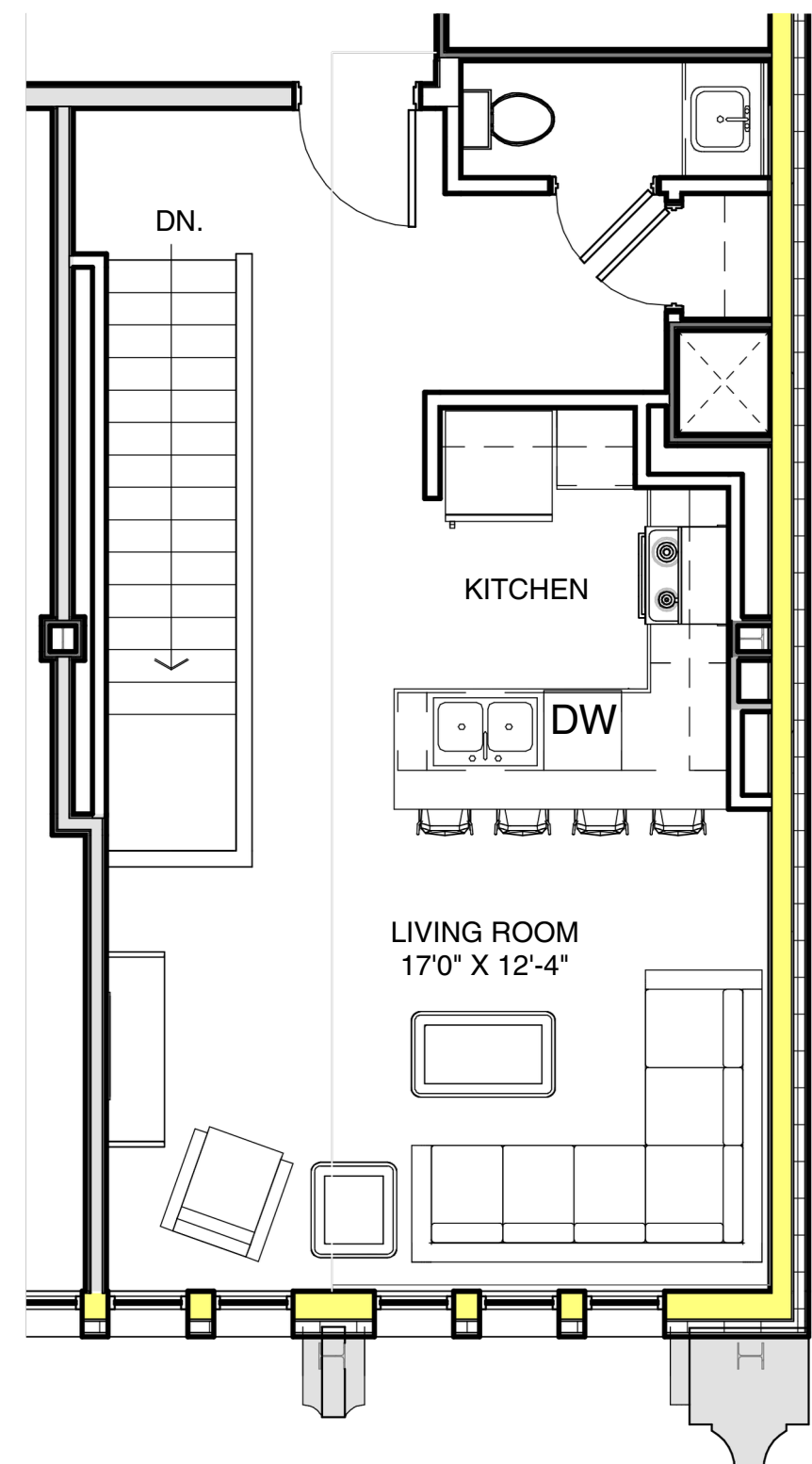


THE ATHLON

Where fitness and comfort reside together.



LOWER LEVEL



SUITE # 1501 PENTHOUSE MULTILEVEL APARTMENT - TWO BEDROOM TWO AND HALF BATH

This apartment faces north and had operable windows on the top floor, and in the guest bedroom too. Enjoy lots of space in comfort with this multilevel apartment.

12 MONTH LEASE PRICE: \$2,000.00/MONTH

1,100 SQFT

READY FOR MOVE IN : WITHIN 30 DAYS



[HTTPS://THEATHLONCAG.COM/](https://theathloncag.com/)



THE ATHLON

Where fitness and comfort reside together.



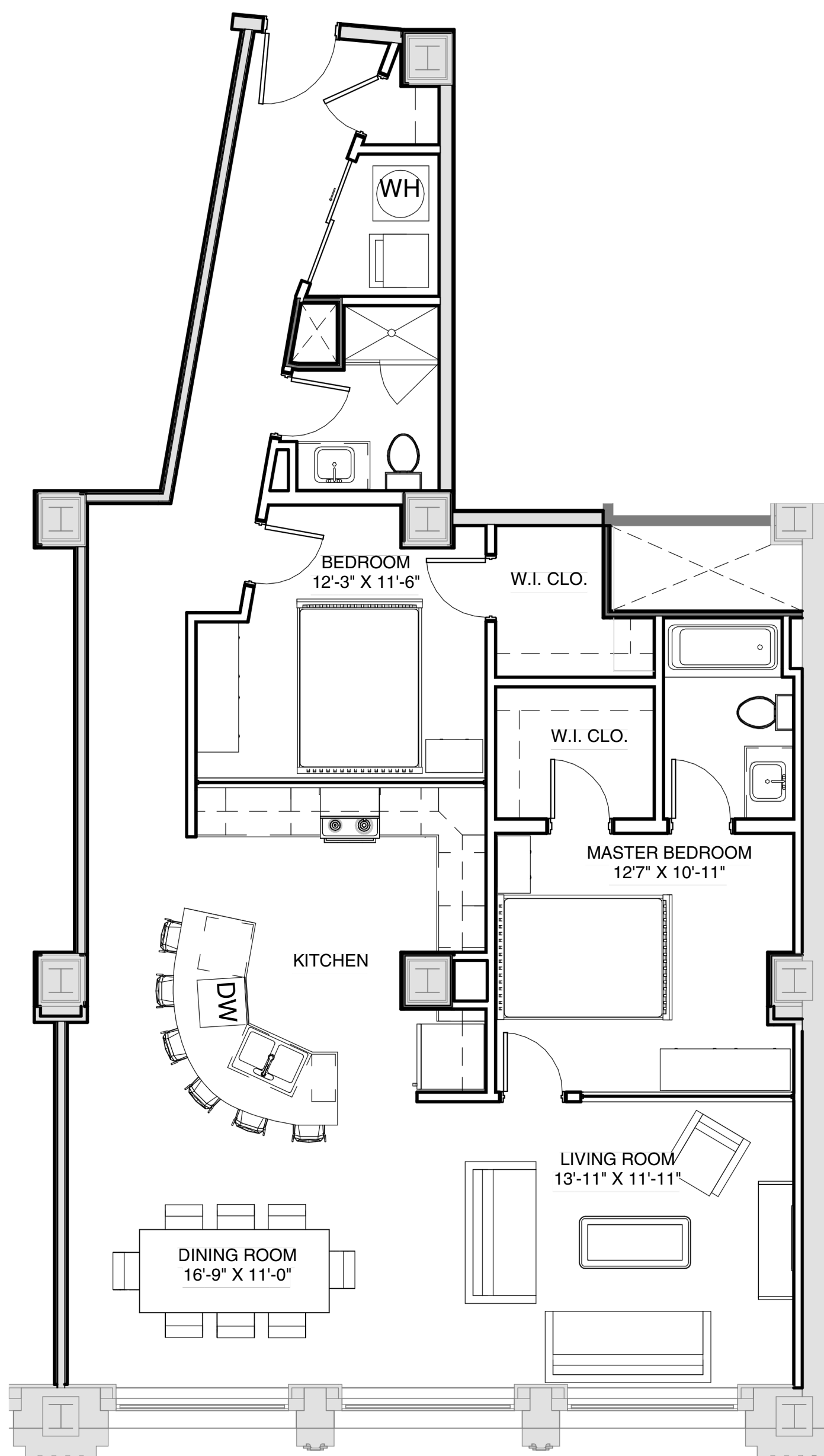
SUITE #601 TWO BEDROOM WITH ENORMOUS KITCHEN ISLAND

Large bedrooms and two full bathrooms make this apartment the largest square foot design in the building.

12 MONTH LEASE PRICE: \$2,000.00/MONTH

1,299 SQFT

READY FOR MOVE IN WITHIN 30 DAYS

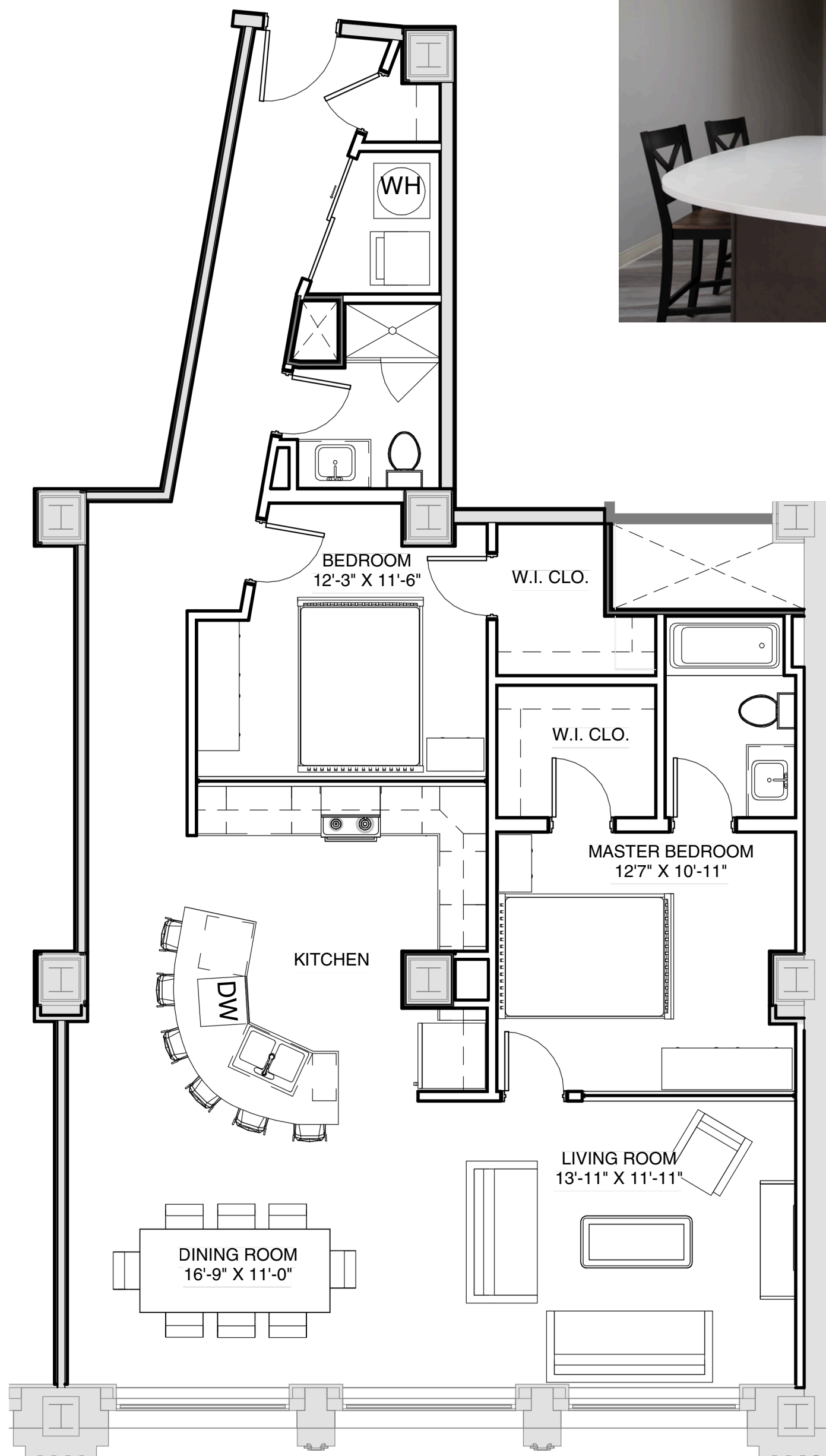


[HTTPS://THEATHLONCAG.COM/](https://theathloncag.com/)



THE ATHLON

Where fitness and comfort reside together.



SUITE # 501 TWO BEDROOM WITH ROOM!

Large bedrooms and two full bathrooms make this apartment the largest square foot design in the building.

12 MONTH LEASE PRICE: \$2,000.00/MONTH

1,301 SQFT

READY FOR MOVE IN WITHIN 30 DAYS

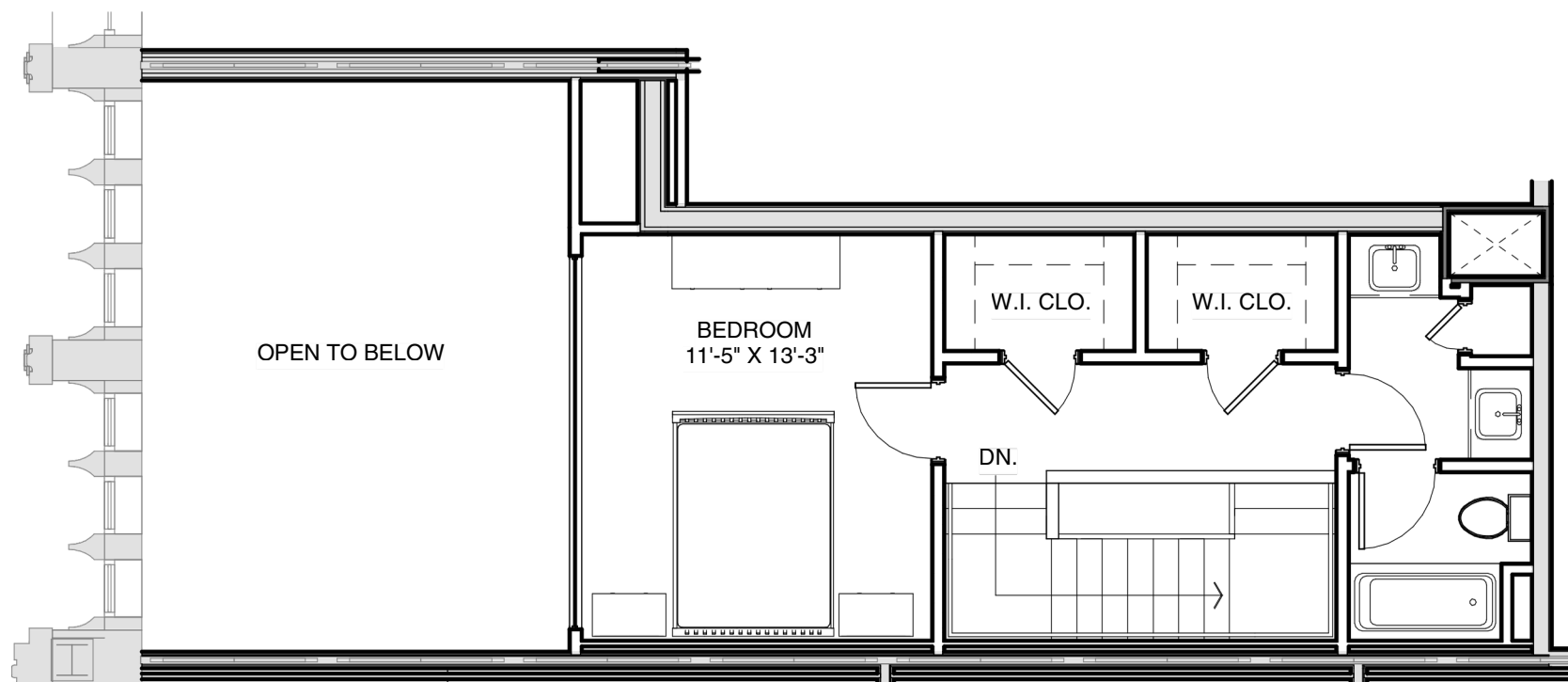


[HTTPS://THEATHLONCAG.COM/](https://theathloncag.com/)

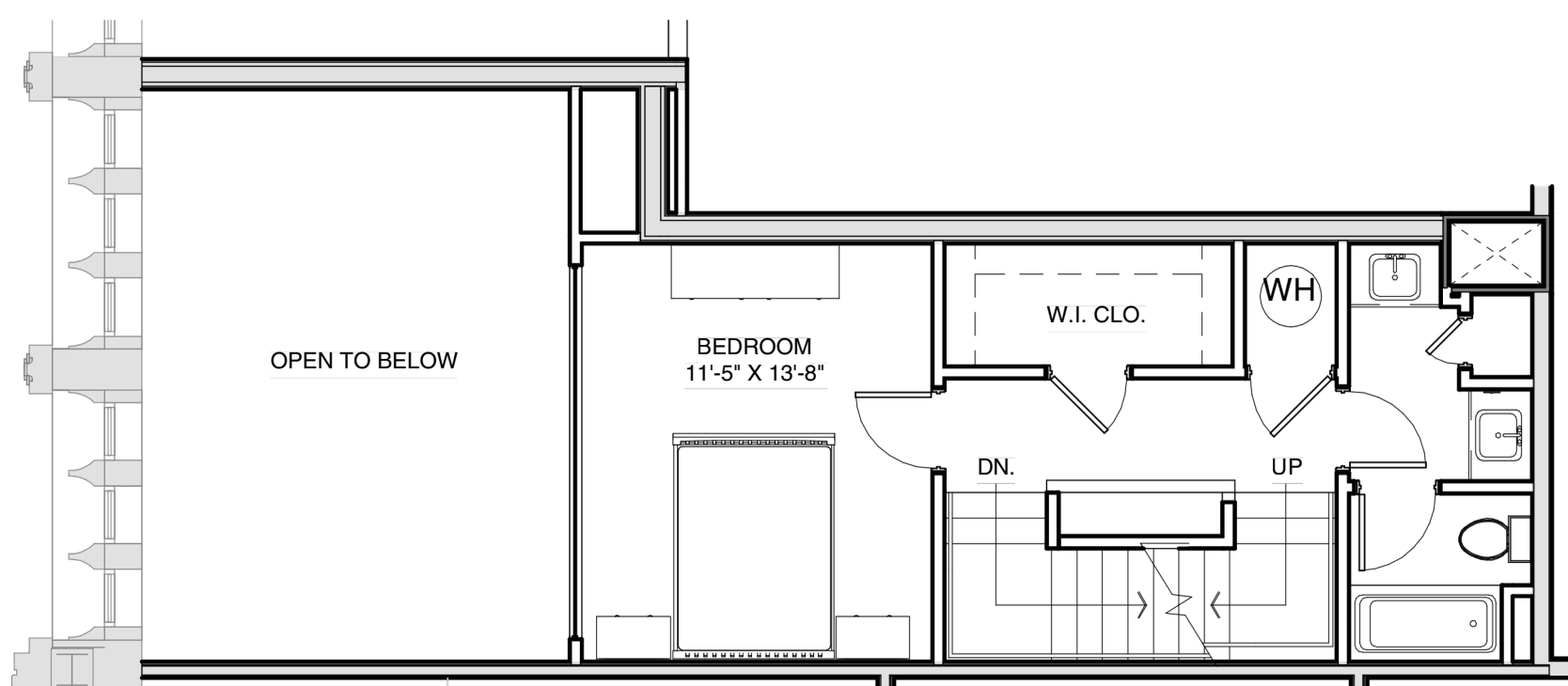


THE ATHLON

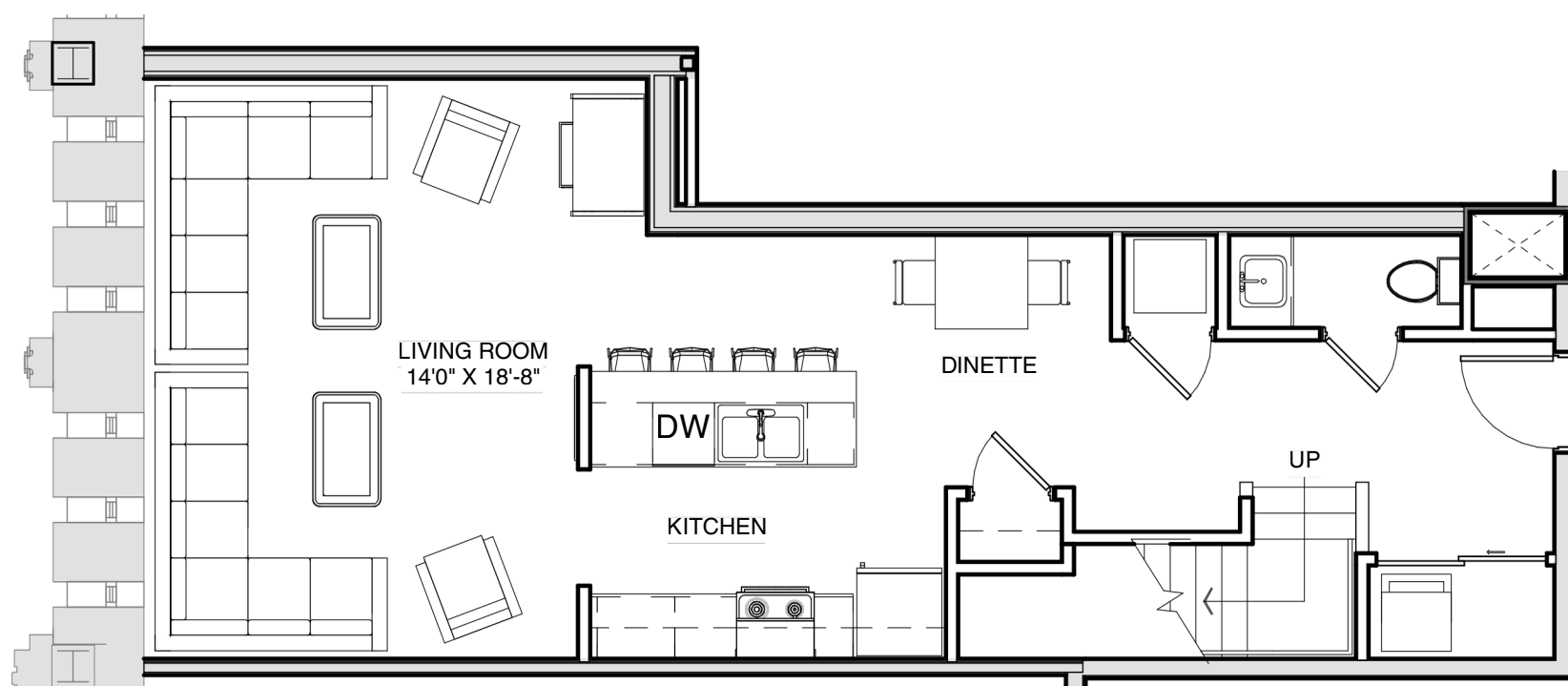
Where fitness and comfort reside together.



UPPER LEVEL



MID LEVEL



LOWER LEVEL

SUITE # 1205 THREE STORY TOWNHOME WITH TWO BED AND TWO AND A HALF BATH

Large bedrooms and two full bathrooms make this apartment the largest square foot design in the building.

12 MONTH LEASE PRICE:

\$2,500.00/MONTH

COMES FURNISHED

1,557 SQFT

**READY FOR MOVE IN WITHIN 30
DAYS**

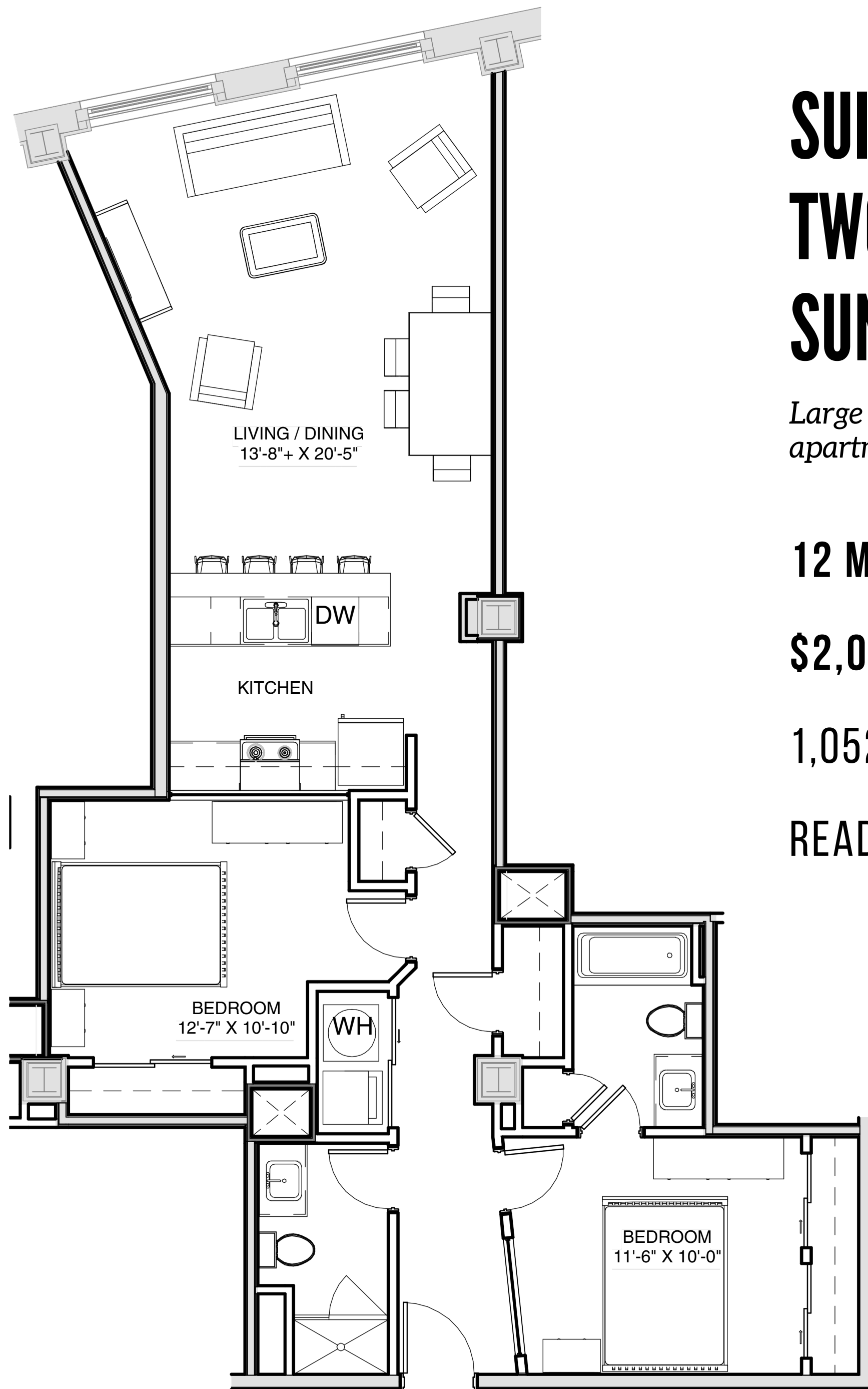


[HTTPS://THEATHLONCAG.COM/](https://theathloncag.com/)



THE ATHLON

Where fitness and comfort reside together.



SUITE # 613 TWO BEDROOM WITH DIRECT SUNLIGHT

Large bedrooms and two full bathrooms make this apartment the largest square foot design in the building.

12 MONTH LEASE PRICE:

\$2,000.00/MONTH

1,052 SQFT

READY FOR MOVE IN OCT. 10TH

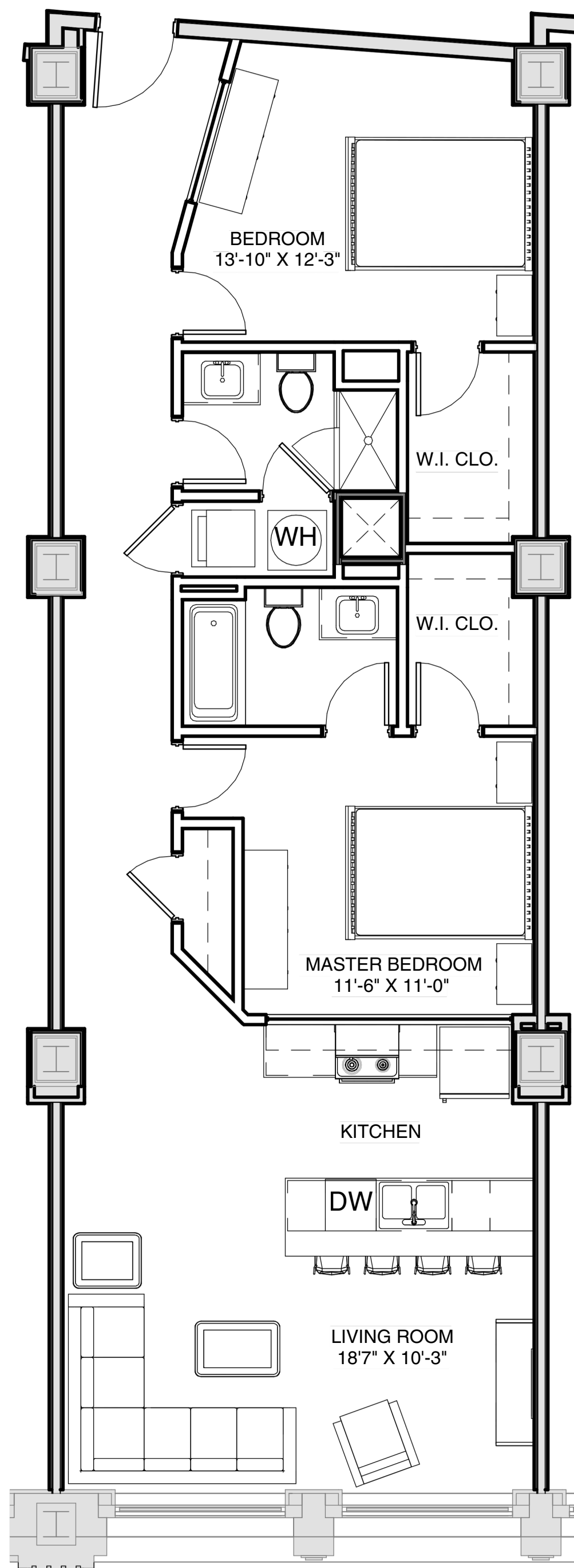


[HTTPS://THEATHLONCAG.COM/](https://theathloncag.com/)



THE ATHLON

Where fitness and comfort reside together.



SUITE # 505 CITY FACING TWO BED/TWO BATH

12 MONTH LEASE PRICE: \$1,999.00/MONTH

1,092 SQFT

READY FOR MOVE IN - MID OCTOBER



[HTTPS://THEATHLONCAG.COM/](https://theathloncag.com/)



*VIDEO OF DIFFERENT APARTMENT WITH SIMILIAR FLOOR PLAN

THE ATHLON

Where fitness and comfort reside together.



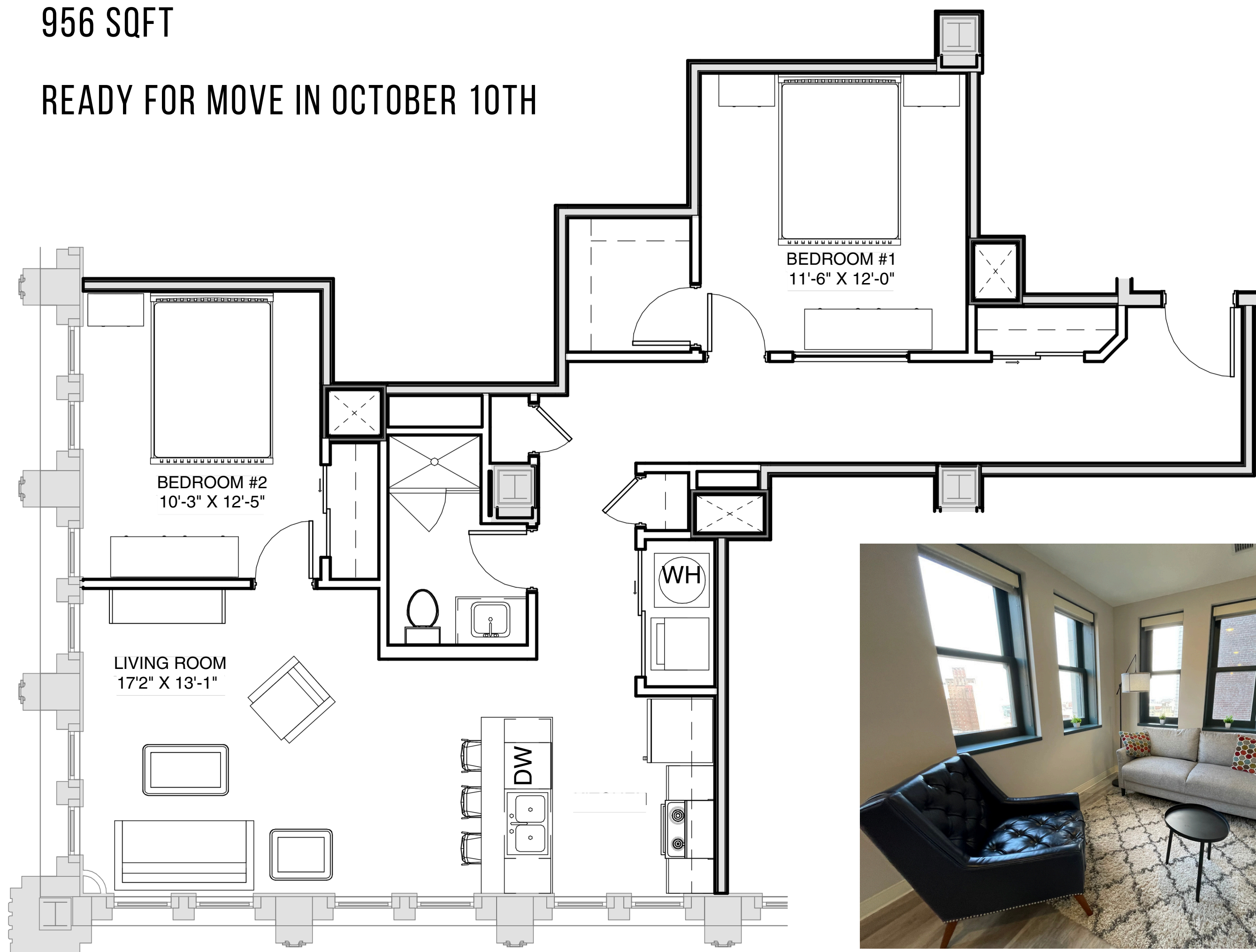
SUITE # 1104 LAKEFRONT VIEWS, CORNER SUITE

During the club era, this was the location of the Coffee Shop known locally for their milkshakes and walls of memorabilia.

12 MONTH LEASE PRICE: \$2,315.00/MONTH

956 SQFT

READY FOR MOVE IN OCTOBER 10TH



[HTTPS://THEATHLONCAG.COM/](https://theathloncag.com/)



VIDEO OF NEIGHBORING APARTMENT WITH DIFFERENT FLOOR PLAN



THE ATHLON

Where fitness and comfort reside together.



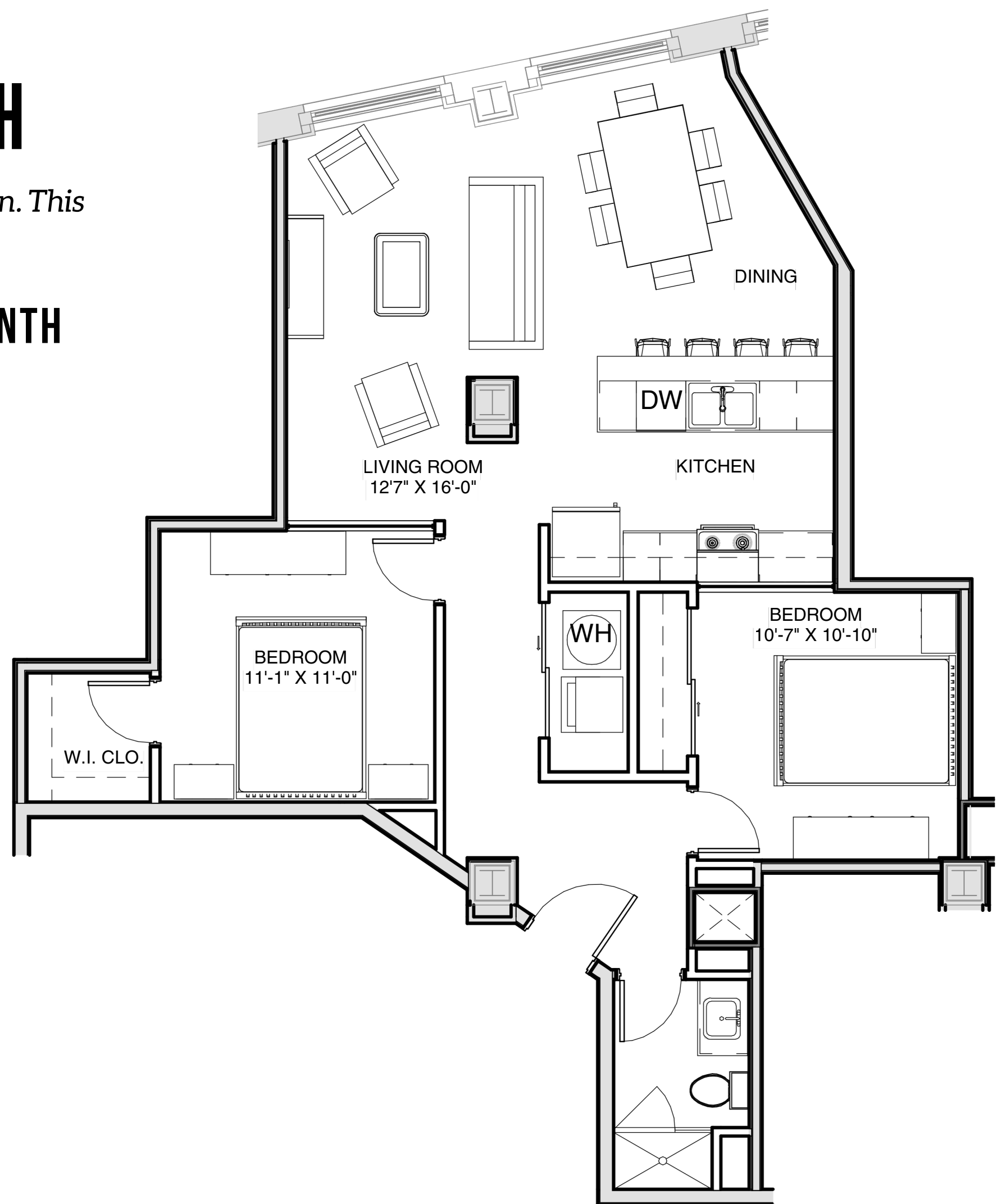
SUITE # 610 TWO BEDROOM AND ONE BATH

During the club era, this was the location of the kitchen. This apartment has white shaker cabinets in the kitchen.

12 MONTH LEASE PRICE: \$1,900.00/MONTH

914 SQFT

READY FOR MOVE IN JANUARY 9TH



VIDEO TOUR COMING SOON